

BURDON AVENUE, HEMLINGTON, MIDDLESBROUGH, TS8 9GS



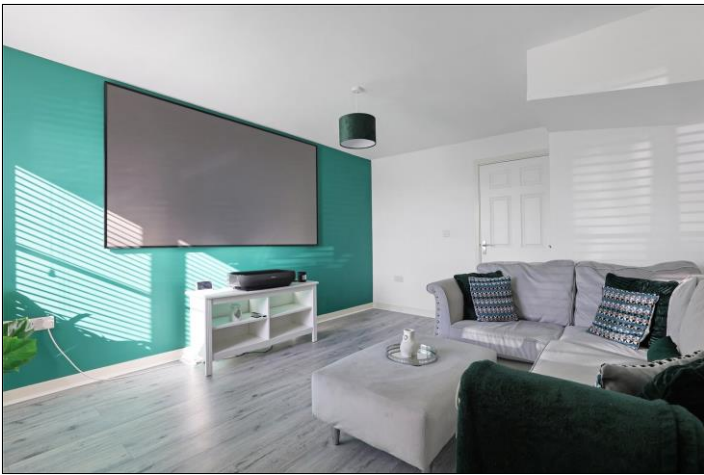
- ▲ Modern Three Storey, Three Bedroom Semi Detached House
- ▲ Located on this Popular Modern Development Built by Persimmon Homes
- ▲ Offering Easy Access to the A174, A19 & A66
- ▲ Spacious Living Room
- ▲ Ground Floor WC

- ▲ Modern Fitted Kitchen
- ▲ Two First Floor Bedrooms
- ▲ Master Bedroom on the Second Floor with En-Suite Shower Room
- ▲ Two Parking Spaces to the Front Elevation
- ▲ Enclosed Rear Garden
- ▲ No Forward Chain

£169,950

www.michaelpoole.co.uk

Michael Poole
sales | lettings | auctions



28 Burdon Avenue is a modern three storey, three bedroom semi-detached house occupying a lovely plot with two parking spaces to the front elevation and an enclosed garden to the rear. Internally the accommodation briefly comprises an entrance porch, living room, inner hallway, cloakroom/WC and fitted kitchen with French doors to the rear garden. To the first floor there are two double bedrooms and a modern bathroom and to the second floor there is a master bedroom with en-suite shower room.

KITCHEN - 3.56m x 2.3m (11'8" x 7'7")

With a modern range of grey fitted wall and floor units with complementing work surfaces, electric oven, hob with extractor, integrated fridge freezer and dishwasher and French doors open to the enclosed rear garden.

GROUND FLOOR

ENTRANCE PORCH

LIVING ROOM - 4.42m x 3.6m (14'6" x 11'10")

With laminate flooring and large storage cupboard.

INNER HALLWAY

With staircase to the first floor.

CLOAKROOM/WC - 1.07m x 1.3m (3'6" x 4'3")

With low level WC, wash hand basin and laminate flooring.

FIRST FLOOR

BEDROOM TWO - 2.62m x 3.58m (8'7" x 11'9")

BEDROOM THREE - 2.3m x 3.58m (7'7" x 11'9")

FAMILY BATHROOM - 2.46m x 1.65m (8'1" x 5'5")

White modern suite comprising bath, low level WC, wash hand basin and part tiled walls.

SECOND FLOOR

MASTER BEDROOM - 5m x 2.57m (16'5" x 8'5")

TO VIEW: Tel: 01642 955625

95 Guisborough Road, Nunthorpe, TS7 0JS

www.michaelpoole.co.uk



BURDON AVENUE, TS8 9GS

EN-SUITE SHOWER ROOM - 1.5m x 3.3m (4'11" x 10'10")

A spacious en-suite shower room comprising shower cubicle, low level WC, wash hand basin, part tiled walls and Velux window.

EXTERNALLY

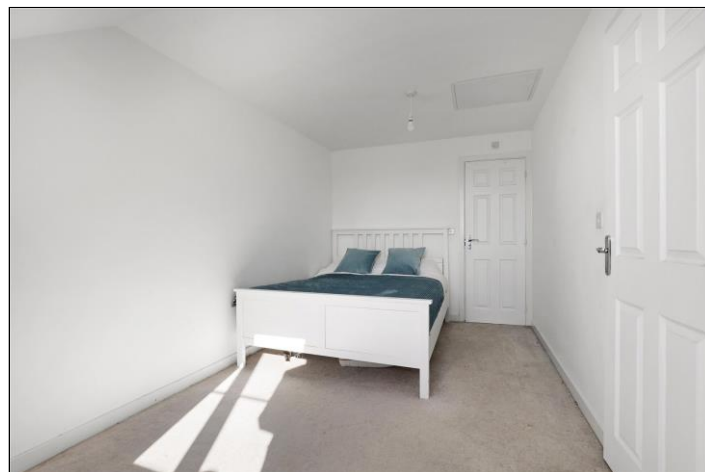
PARKING & GARDEN

Externally to the front elevation there are two parking spaces and to the rear there is an enclosed garden laid to lawn.

AGENTS REF: - DP/LS/NUN240049/18042024

Council Tax Band: C **Tenure:** Freehold

TO VIEW: Contact our Nunthorpe office on
Tel: **01642 955625**

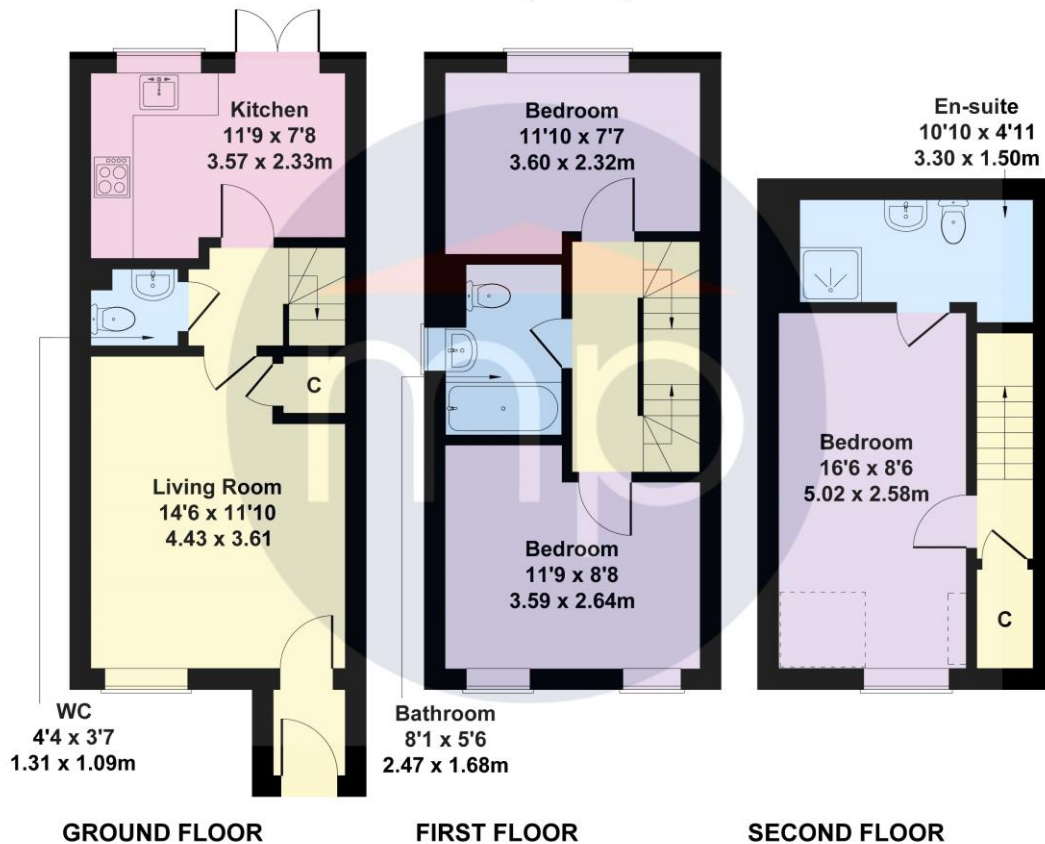


BURDON AVENUE, TS8 9GS



Burdon Ave

Approximate Gross Internal Area
936 sq ft - 87 sq m



Not to Scale. Produced by The Plan Portal 2024
For Illustrative Purposes Only.

The information provided about this property does not constitute or form part of an offer or contract, nor may it be regarded as representations. All interested parties must verify accuracy and your solicitor must verify tenure and lease information, fixtures and fittings and, where the property has been recently constructed, extended or converted, that planning/building regulation consents are in place. All dimensions are approximate and quoted for guidance only, as are floor plans which are not to scale, and their accuracy cannot be confirmed. Reference to appliances and/or services does not imply that they are necessarily in working order or fit for the purpose. We offer our clients an optional conveyancing service, through panel conveyancing firms, via MWU and we receive on average a referral fee of one hundred and thirty pounds, only on completion of the sale. If you do use this service, the referral fee is included within the amount that you will be quoted by our suppliers. All quotes will also provide details of referral fees payable.

Energy Efficiency Rating		Current	Potential
Very energy efficient - lower running costs			
(92-)	A		94
(81-91)	B	84	
(69-80)	C		
(55-68)	D		
(39-54)	E		
(21-38)	F		
(1-20)	G		
Not energy efficient - higher running costs			
England, Scotland & Wales		EU Directive 2002/91/EC	



TO VIEW: Contact our Nunthorpe Office on Tel: **01642 955625**
95 Guisborough Road, Nunthorpe, TS7 0JS